

Rendering Only

FOR LEASE



Retail Land Built-to-suit

3580 Lexington Ave, Shoreview, MN 55126

Dan Altstatt
Commercial Brokerage

612.404.0157
dan@redbrickcommercial.com



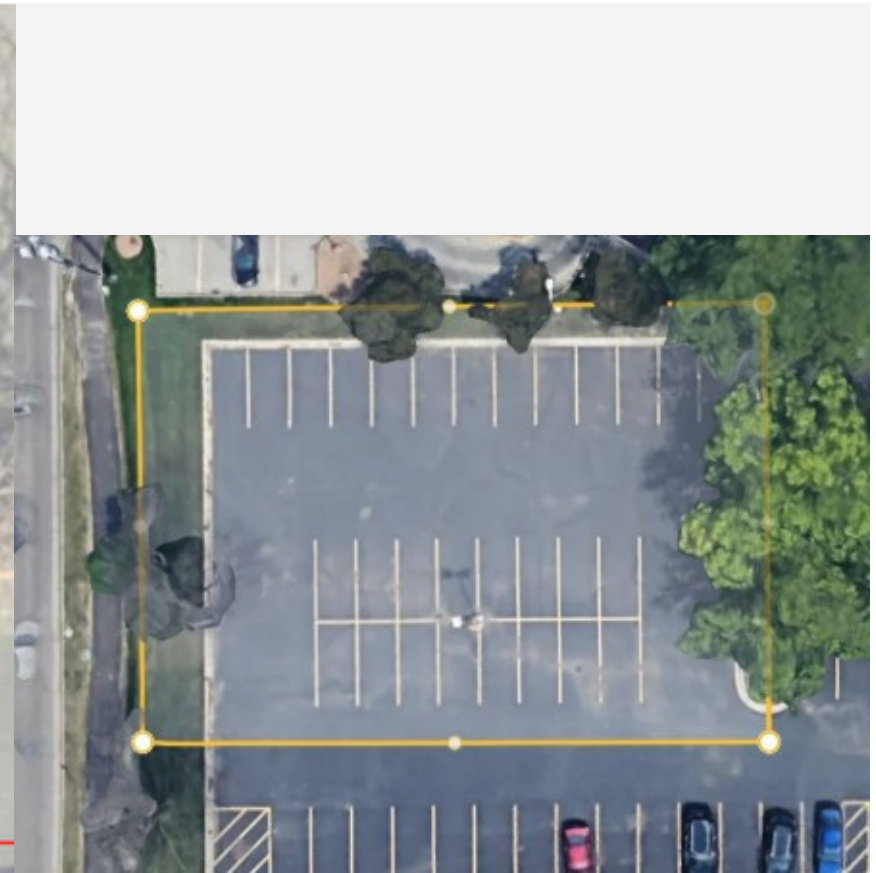
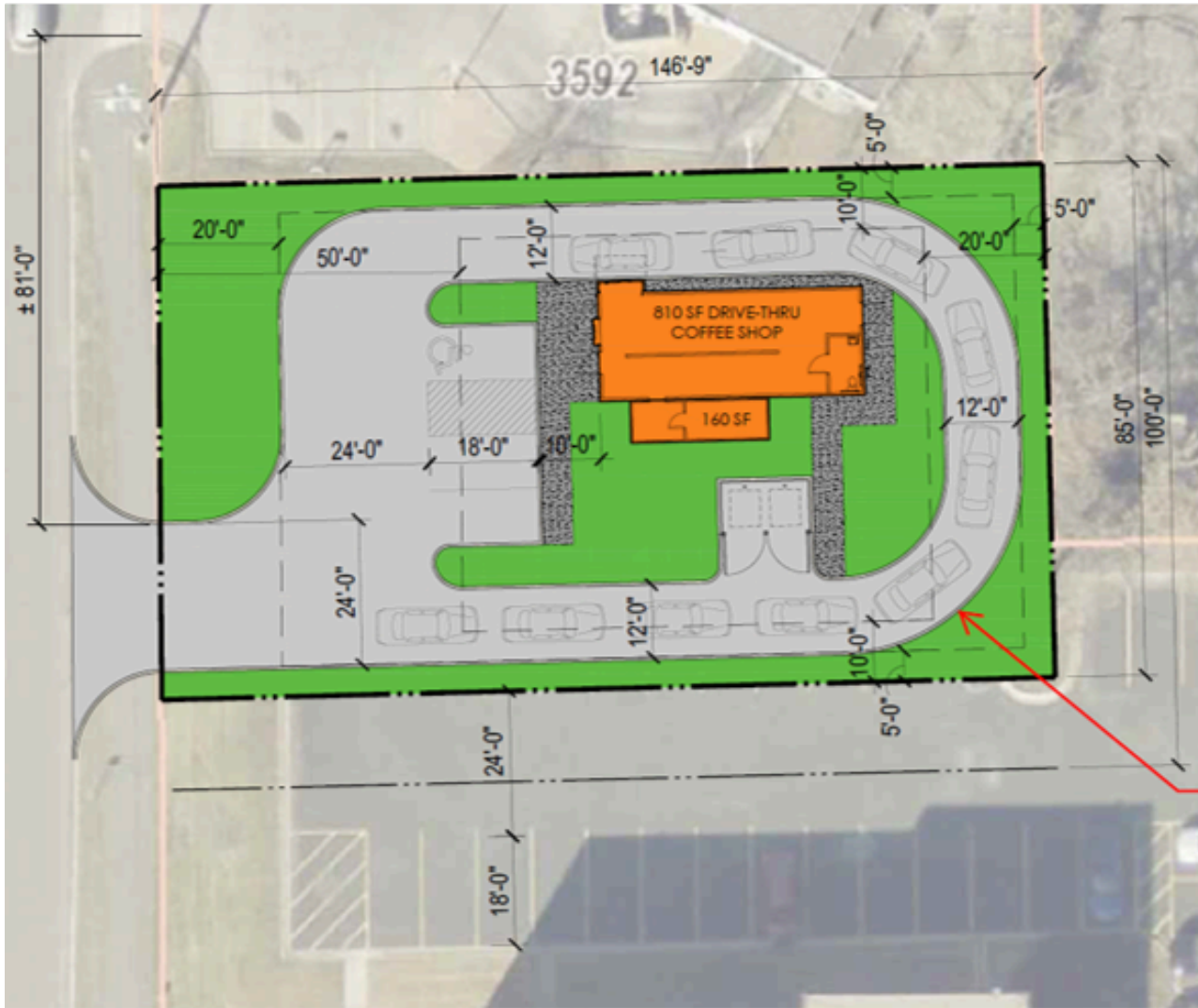
Executive Summary

3580 Lexington Ave,
Shoreview, MN

- Drive thru retail use on approximately .31 acres
- Build-to-Suit or ground lease
- Well-located retail district on the border of Shoreview and Arden Hills
- Ready for construction Spring 2026

Site Plans

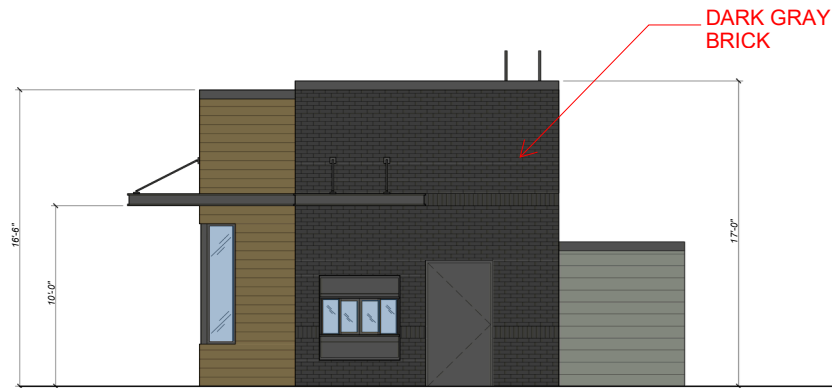
**3580 Lexington Ave,
Shoreview, MN**



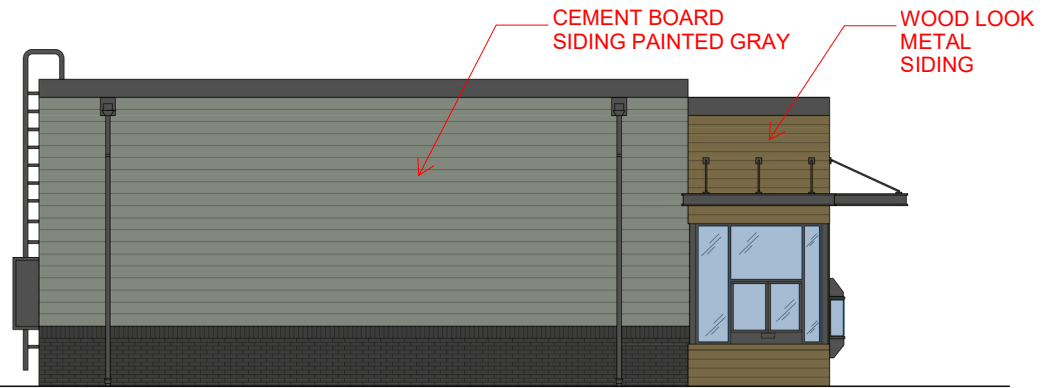
- Negotiable sub parcel size of approximately 13,350 sq. ft.

Elevation Designs

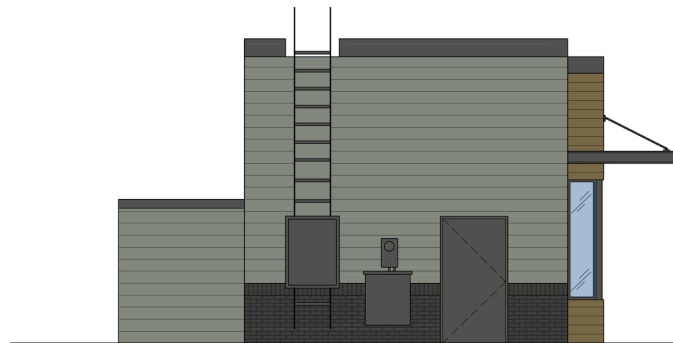
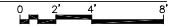
3580 Lexington Ave,
Shoreview, MN



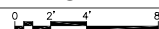
1
A3.1 PRELIMINARY WEST (FRONT) ELEVATION
1/4"=1'-0"



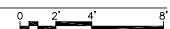
2
A3.1 PRELIMINARY NORTH ELEVATION
1/4" = 1'-0"



3
A3.1 PRELIMINARY EAST ELEVATION
1/4"=1'-0"



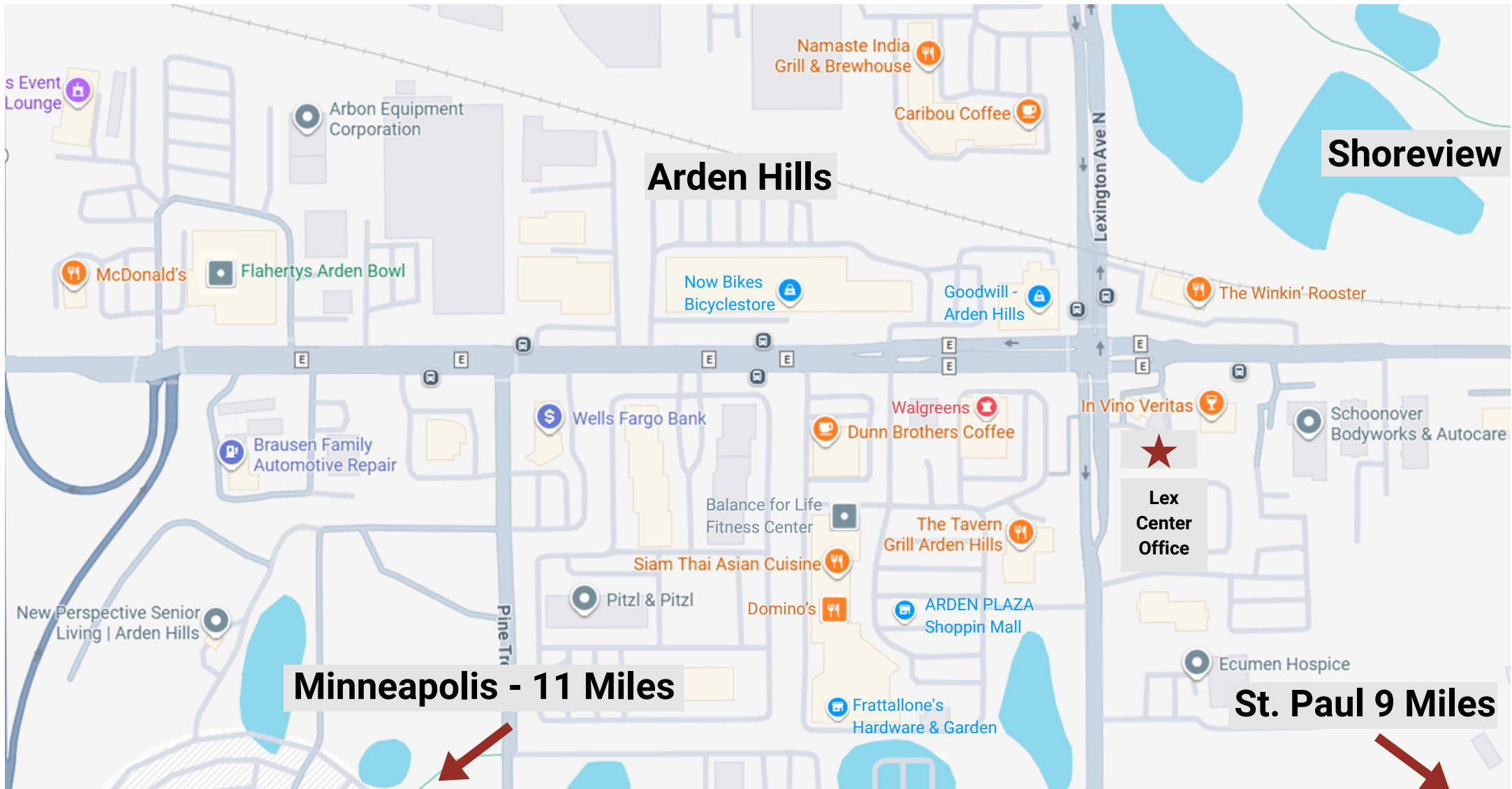
4
A3.1 PRELIMINARY SOUTH ELEVATION
1/4" = 1'-0"



Location Map

3580 Lexington Ave,
Shoreview, MN

★ Subject Property



Contact Information

3580 Lexington Ave,
Shoreview, MN

Dan Altstatt, CCIM
Redbrick Commercial

3570 Lexington Ave., Suite 150
Shoreview, MN 55126

612-404-0157

dan@redbrickcommercial.com



*All information from sources is deemed reliable but not guaranteed and should be independently verified.

